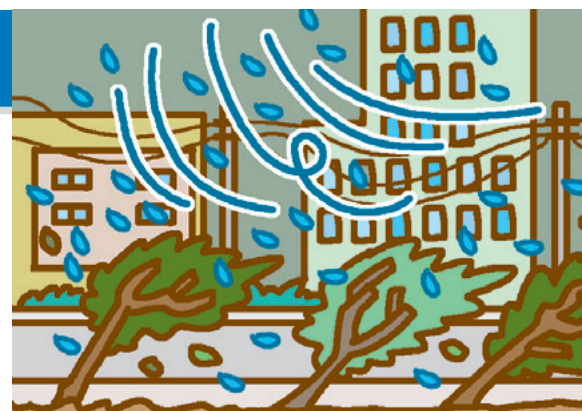




Typhoon

A typhoon is a tropical cyclone with strong winds or heavy rain or both, and with a maximum wind speed of about 17 meters per second or more. Minimize damage from typhoons by paying attention to typhoon-related information.



Wind strength and wind blow pattern

Average wind speed (m/sec)	10 or more – less than 15	15 or more – less than 20	20 or more – less than 25	25 or more – less than 30	30 or more – less than 35	35 or more – less than 40	40 or more
Prediction terms	Slightly strong wind	Strong wind	Very strong wind		Fierce wind		
Impact on people	It becomes hard to walk towards the wind. Umbrellas cannot be used.	It becomes hard to walk towards the wind, and some people will fall down.	It becomes hard to stand up without holding on to something. There is danger of being injured by flying objects.	Outdoor activities become extremely dangerous.			
Outdoors	Trees & power lines begin swaying.	Power lines begin making high-pitched sounds. Signboards and sheets of galvanized iron start becoming loose.	Thin tree trunks snap, trees that have not yet taken root begin collapsing. Signboards fall or become airborne. Road signs bend.		Many trees fall. Utility power poles & street lights fall. Concrete walls collapse.		
In a moving car	Roadside windsocks fly horizontally, will feel a sensation of being swept away by crosswinds while driving at high speeds.	While driving at high speeds, the sensation of being swept away by crosswinds increases.	It becomes difficult to drive at normal speeds.		A moving truck will overturn.		

Major dangers or damage caused by typhoons

- Injuries may be sustained from falling signboards, roof tiles, broken glasses, etc., that have been blown away by strong winds.
- Carport ceilings will be blown away.
- Vinyl house film covers will be torn off.
- Scaffoldings, etc., that are insufficiently secured in construction sites will collapse, and materials will be blown away.
- Electrical wires will be cut off and power outages will occur.
- Trains, airplanes, ships, etc., and other transportation / transport systems will not be available. etc.

Avoid going outdoors unnecessarily!

Torrential rain

Torrential rain is a heavy downpour which is concentrated in a narrow area lasting for a short period of time and often occurs around the end of the rainy season. It is relatively difficult to forecast since it falls suddenly and only in narrow areas.

Be careful with guerrilla rainstorms!

In recent years, there have been cases in which people have lost their lives to "localized heavy rain" or "torrential rain", which are brief, heavy downpours concentrated in narrow areas. These are called "guerrilla rainstorms" due to the fact that they happen suddenly and are very difficult to predict. Guerrilla rainstorms are characterized by "river flooding", "abrupt rise in water level", "low-land water inundation", etc.

