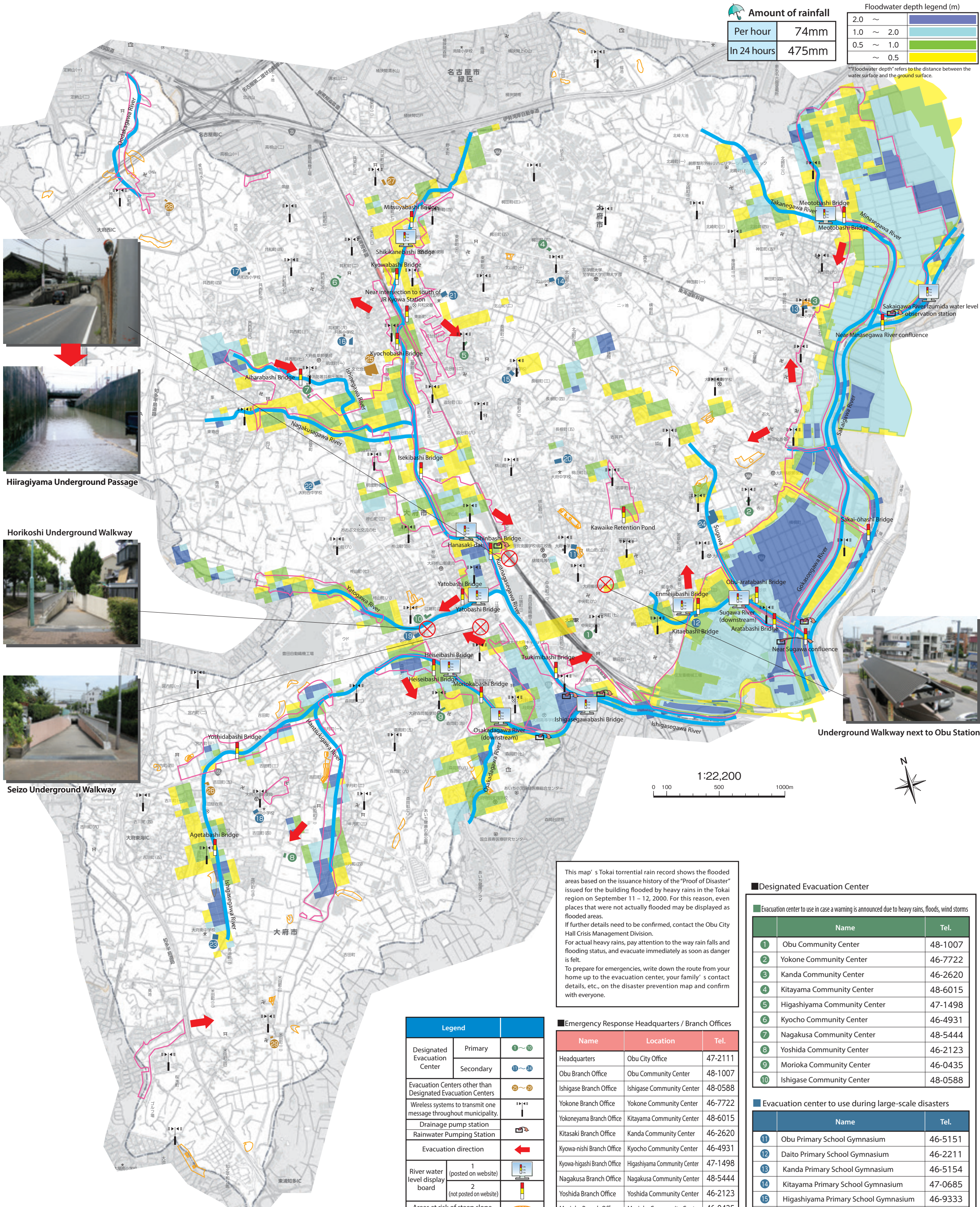


# Flood Map

This flood map was computed based on data from the “Boundary River Basin Flood Forecast Simulation” conducted in August 2012 in Aichi Prefecture and shows the inundation damage caused by rainfall expected to occur only once in every 100 years.



Amount of rainfall

Per hour	74mm
In 24 hours	475mm

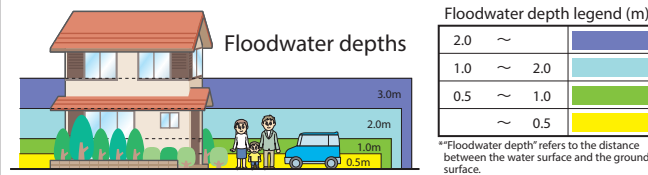
Floodwater depth legend (m)

2.0 ~	
1.0 ~ 2.0	
0.5 ~ 1.0	
~ 0.5	

\*Floodwater depth refers to the distance between the water surface and the ground surface.

## Water level at which autonomous evacuation is possible

- 1 If water is beginning to accumulate in roads, start preparing to evacuate.
- 2 If water is up to your ankles, start evacuating immediately.
- 3 If water is up to your knees, do not attempt to reach the evacuation area, and instead take shelter in a sturdy building nearby, on the second floor or above.



## Siren signals when evacuation orders are given

Type	Evacuation signal	Signal conveyed
Siren signal	approx. 3 seconds on, approx. 3 seconds off, approx. 2 seconds on, approx. 2 seconds off, approx. 2 seconds on, approx. 2 seconds off	Siren sounds to give evacuation advisories and instructions when there is risk of rivers flooding due to heavy rain or typhoons. Siren sounds for more than three minutes continuously

This map's Tokai torrential rain record shows the flooded areas based on the issuance history of the "Proof of Disaster" issued for the building flooded by heavy rains in the Tokai region on September 11 - 12, 2000. For this reason, even places that were not actually flooded may be displayed as flooded areas.

If further details need to be confirmed, contact the Obu City Hall Crisis Management Division.

For actual heavy rains, pay attention to the way rain falls and flooding status, and evacuate immediately as soon as danger is felt.

To prepare for emergencies, write down the route from your home up to the evacuation center, your family's contact details, etc., on the disaster prevention map and confirm with everyone.

## Emergency Response Headquarters / Branch Offices

Name	Location	Tel.
Headquarters	Obu City Office	47-2111
Obu Branch Office	Obu Community Center	48-1007
Ishigase Branch Office	Ishigase Community Center	48-0588
Yokone Branch Office	Yokone Community Center	46-7722
Kitayama Branch Office	Kitayama Community Center	48-6015
Kitasaki Branch Office	Kanda Community Center	46-2620
Kyowa-nishi Branch Office	Kyocho Community Center	46-4931
Kyowa-higashi Branch Office	Higashiyama Community Center	47-1498
Nagakusa Branch Office	Nagakusa Community Center	48-5444
Yoshida Branch Office	Yoshida Community Center	46-2123
Morioka Branch Office	Morioka Community Center	46-0435

## Evacuation Centers other than Designated Evacuation Centers

Name	Tel.
25 Aisan Bunka Kaikan Hall	48-6151
26 Yoshida Children's and Senior Citizens' Welfare Center	46-5220
27 Mitsuya Community Center	
28 Konoyama Community Center	
29 Komeda Community Center	

## Designated Evacuation Center

Name	Tel.
1 Obu Community Center	48-1007
2 Yokone Community Center	46-7722
3 Kanda Community Center	46-2620
4 Kitayama Community Center	48-6015
5 Higashiyama Community Center	47-1498
6 Kyocho Community Center	46-4931
7 Nagakusa Community Center	48-5444
8 Yoshida Community Center	46-2123
9 Morioka Community Center	46-0435
10 Ishigase Community Center	48-0588

## Evacuation center to use during large-scale disasters

Name	Tel.
11 Obu Primary School Gymnasium	46-5151
12 Daito Primary School Gymnasium	46-2211
13 Kanda Primary School Gymnasium	46-5154
14 Kitayama Primary School Gymnasium	47-0685
15 Higashiyama Primary School Gymnasium	46-9333
16 Kyocho Primary School Gymnasium	46-5161
17 Kyowa-nishi Primary School Gymnasium	47-7007
18 Yoshida Primary School Gymnasium	46-5164
19 Ishigase Primary School Gymnasium	47-8111
20 Obu Junior High School Gymnasium	46-5301
21 Obu-kita Junior High School Gymnasium	47-3611
22 Obu-nishi Junior High School Gymnasium	47-0687
23 Obu-minami Junior High School Gymnasium	48-7758
24 Medias Taiikukan Obu Gymnasium	47-0102