

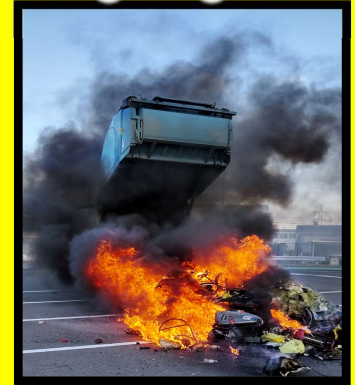
# Obu City Disposing of rechargeable batteries

英語

Most rechargeable batteries have these symbols!



They can cause a fire if mixed in with garbage!



Batteries without these symbols also collected!

Found in appliances like these!



## Disposal

① Insulate with tape



② Place in transparent bag



③ Leave at recyclable collection station  
\*See overleaf



## Dismantling is dangerous!

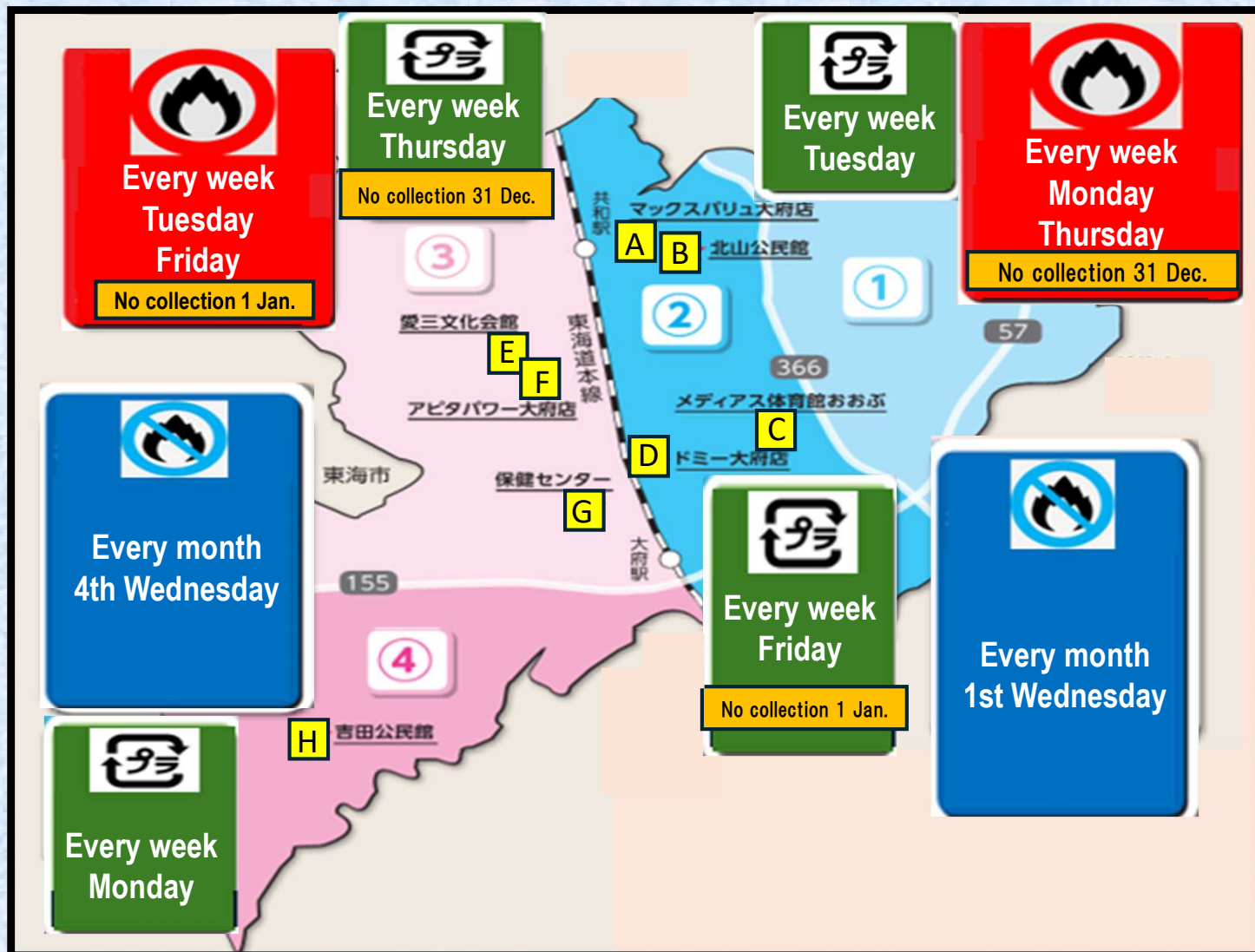
Items smaller than your hand can be disposed of as they are!



## Further information



# Burnable waste / Non-burnable waste / Plastic



## Dispose of recyclables here

|   | Name                      | Collection day & time              |
|---|---------------------------|------------------------------------|
| A | MaxValu Obu Store         | 1st & 3rd Sunday (9:00 ~ 21:00)    |
| B | Kitayama Community Center | 2nd & 4th Monday (9:00 ~ 18:30)    |
| C | Medias Gymnasium Obu      | 2nd & 4th Tuesday (9:00 ~ 18:30)   |
| D | Domy Obu Store            | Every Wednesday (10:00 ~ 20:00)    |
| E | Aisan Bunka Hall          | 1st & 3rd Wednesday (9:00 ~ 18:30) |
| F | Apita Power Obu Store     | Every Monday (9:00 ~ 21:00)        |
| G | Health Center             | 2nd & 4th Wednesday (9:00 ~ 18:30) |
| H | Yoshida Community Center  | 1st & 3rd Sunday (9:00 ~ 18:30)    |

## Waste / recyclables separation app

資源・ごみ分別アプリ  
**さんあ〜る**<sup>®</sup>

App Store からダウンロード

GET IT ON Google Play

## Further information



Obu City official website